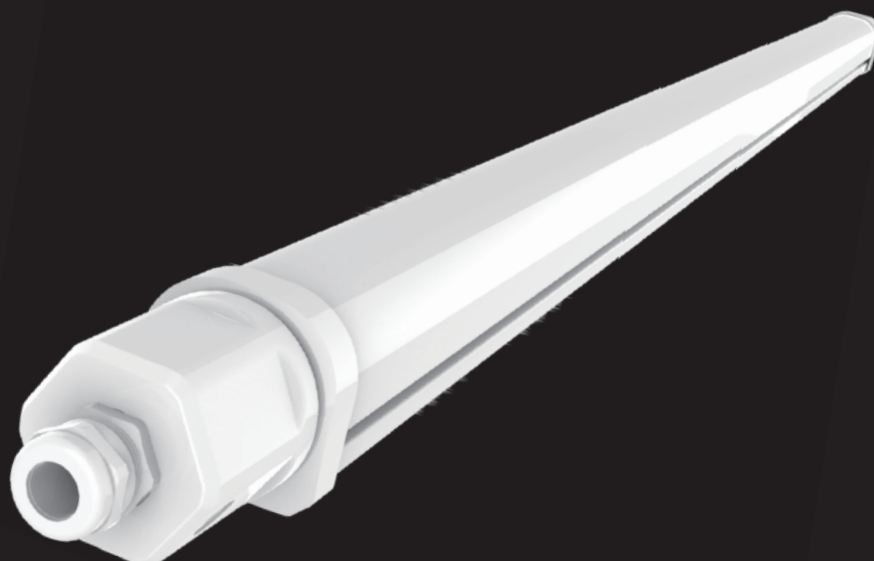


Essence Tri-proof Luminaire

T66

- Installation Height : 2-4m
- Parking Garage



T66 was designed and developed to be the most cost-efficient lighting solution for parking garage. Garages are often considered dark, dirty, narrow and unsafe areas, T66 is changing this image rapidly thanks to its uniform illumination, wide lighting distribution, slim design, which will reassure the users and attract more customers.







Features

- Tool-free and fast installation
- Diffusor and heat sink integrated design
- IP65/IK08 rating
- High efficiency up to 6000lm 150lm/W
- ENEC approved

Slim Design



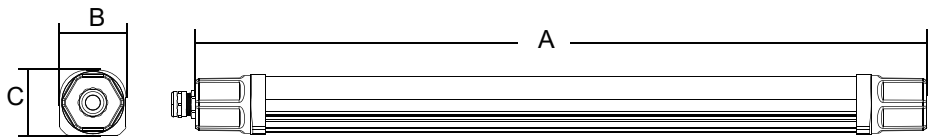
All-PC Design



Tool-free Installation Design



Product Dimension



Model NO.	Size A(mm)	Size B(mm)	Size C(mm)
T66 600mm	2FT(600mm)	54	53
T66 1200mm	4FT(1200mm)	54	53
T66 1500mm	5FT(1500mm)	54	53

Parameter

Model NO. / Length	Power(W)	(Frosted Cover) Lumens	
		120Lm/W	150Lm/W
T66 (600mm)	20	2400	3000
T66 (1200mm)	30	3600	4500
T66 (1500mm)	40	4800	6000

Notes:

- Clear cover is 10lm/W more than frosted cover
- Above lumens based on 4000K Ra : 80
- All values in +25°C ambient temperature
- Luminous flux tolerance +-5%, power tolerance +-5%.

AC Input	220-240V 50/60Hz
Light Source	2835 SDCM<5 (SDCM<3 option)
CRI Range	80 / 90 / 95
CCT Range	WW(3000K) NW(4000K) DW(5000K) CW(6500K)
Light Efficiency	120Lm/W, 150Lm/W
Beam Angle	120°
L70B10 / L70B50	@Ta 25 °C : 69000h / 78000h
Size	54(W)*53(H)
Waterproof	IP65 & IK08
Installation Height	2-4M
Function	None

Accessory part number matrix

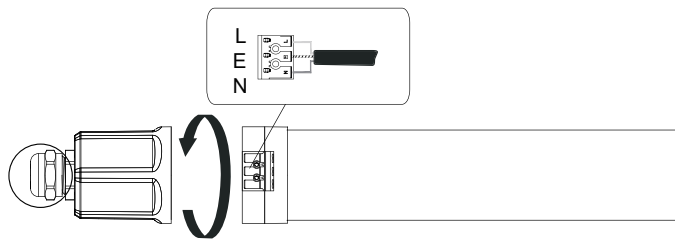


Mounting Accessories

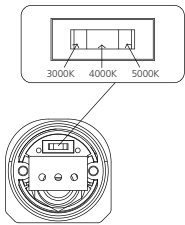
ACCESSORIES	IMAGE	DESIGNTION	MATERIAL	DESCRIPTION	QUANTITY	ACCESSORY USE
Standard	01	Metal Bracket	Stainless steel	49X28X20mm	2PCS	Used for the ceiling mounted and suspending.
Standard	02	Screw	Stainless steel	4X20mm	2PCS	Used for the ceiling mounted.
Optional	03	Suspending Cable	Stainless steel	1M/1.2M/1.5M/3M	2PCS	Used for the suspending.

Wiring

Standard

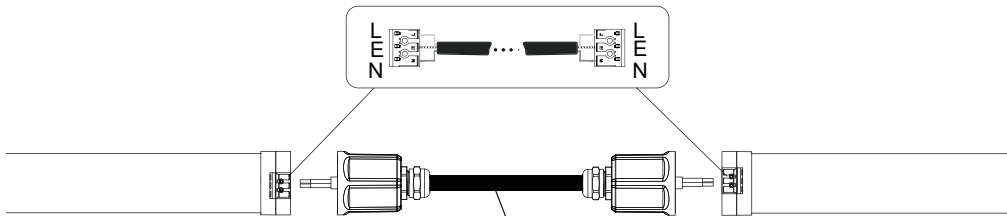


Twist the end cap and connect the cable.



CCT switch can adjust 3000K/4000k/5000K.

Linkable



The min. diameter is $\geq 1.5\text{mm}^2$
Dimension : $8\text{mm} < C < 12\text{mm}$

• How many luminaires can be connected?

Wattage	B10	B16	C10	C16
30W	52	83	52	83
40W	37	59	37	59

Installation

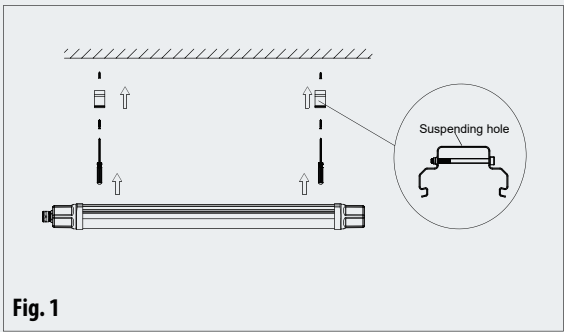


Fig. 1

1 Ceiling Mounted

- A : Make a right position and screw hole
- B : Screw the clip on the ceiling tightly
- C : Install the lamp into the clips.
- D : Adjust the position of the fixture and clean it..

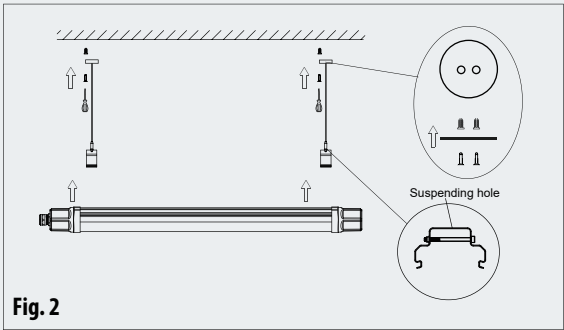



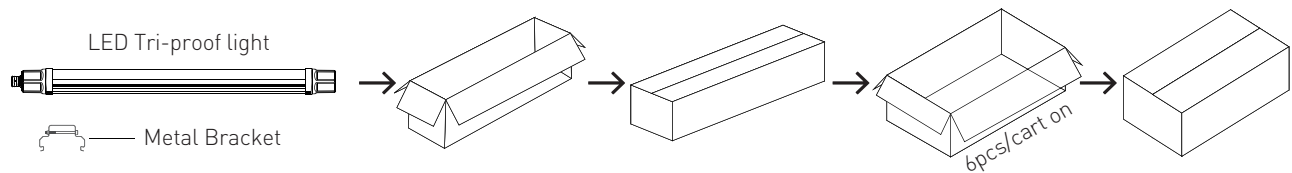
Fig. 2

2 Suspending

- A : Make a right position and screw hole
- B : Screw the steel cable onto the ceiling
- C : Hung the fixture under the steel cable and secure the fixture by steel cable
- D : Adjust the position of the fixture and clean it..

- Please Note:All the operations must be in the condition of power off
-  The luminaires are intended for indoor use. If you don't understand anything, please consult the sales staff.

Packaging



A.Packing list

Sequence Number	Model NO.	Quantity
1	LED Tri-proof light	1pcs
2	Metal Bracket	2pcs
3	Manual	1pcs

B.Packing Data

Model No	Single Box	Pcs/CTN	N.W./Panel (kg)	G.W./CTN (kg)	Meas (mm)
T66 600mm	1	6	0.55	4.82	790*242*175
T66 1200mm	1	6	0.92	7.86	1390*242*175
T66 1500mm	1	6	1.14	9.72	1690*242*175

Attention

This specification is for reference only,we reserve the right to change without notice.If you need the updated info,please contact local distributors or visit our website at <http://www.ervan.cn>

This product is non-resistant to some chemical substances,please contact the manufacturer for the details.

ERVAN reserves the right of final explanation.

Statement

According to the International Standard of LED luminaire, here ERVAN formally claims that ERVAN LED Tri-proof(Weather proof) series products is only allowed to be applied to indoor or semi-outdoor neutral environment. Meanwhile ERVAN promises full warranty for the products.

Any severe environment application including high/low temperature, high humidity, high salinity, high-ammonia etc..is not permitted without the official confirmation from the manufacturer. If any misapplication happens, the warranty policy is no longer guaranteed.